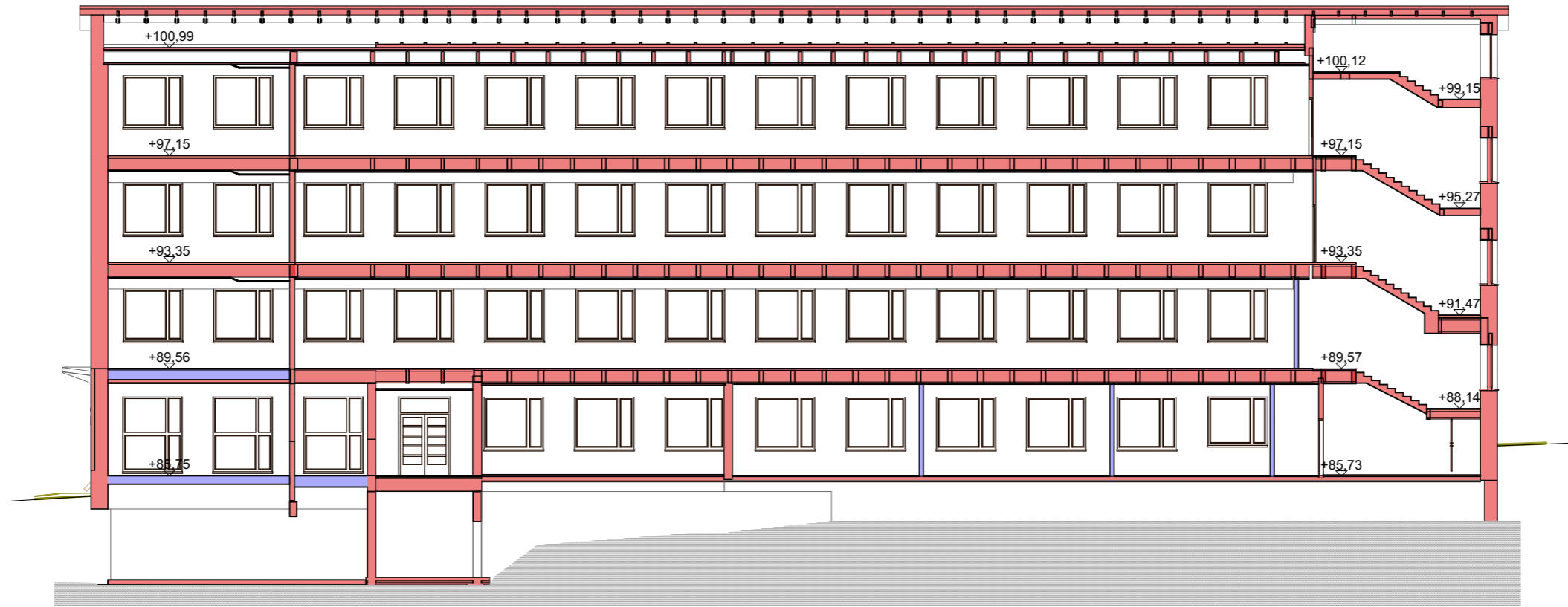


bruttoala sis. ullakon konehuoneet ja porrashuoneet **4 837 brm<sup>2</sup>**  
 bruttoala sis. kylmä ullakko **5 726 brm<sup>2</sup>**  
 kerrosala **4 538 kem<sup>2</sup>**  
 tilavuus **18 800 m<sup>3</sup>**  
 huoneistoala **3 782 htm<sup>2</sup>**  
 huoneistoala perusopetus **2 843 htm<sup>2</sup>**  
 huoneistoala esiopetus **254 htm<sup>2</sup>**  
 huoneistoala oppilashuolto **120 htm<sup>2</sup>**  
 huoneistoala Voimia **152 htm<sup>2</sup>**  
 huoneistoala kirjasto **413 htm<sup>2</sup>**

Asemapiirustus

1:500

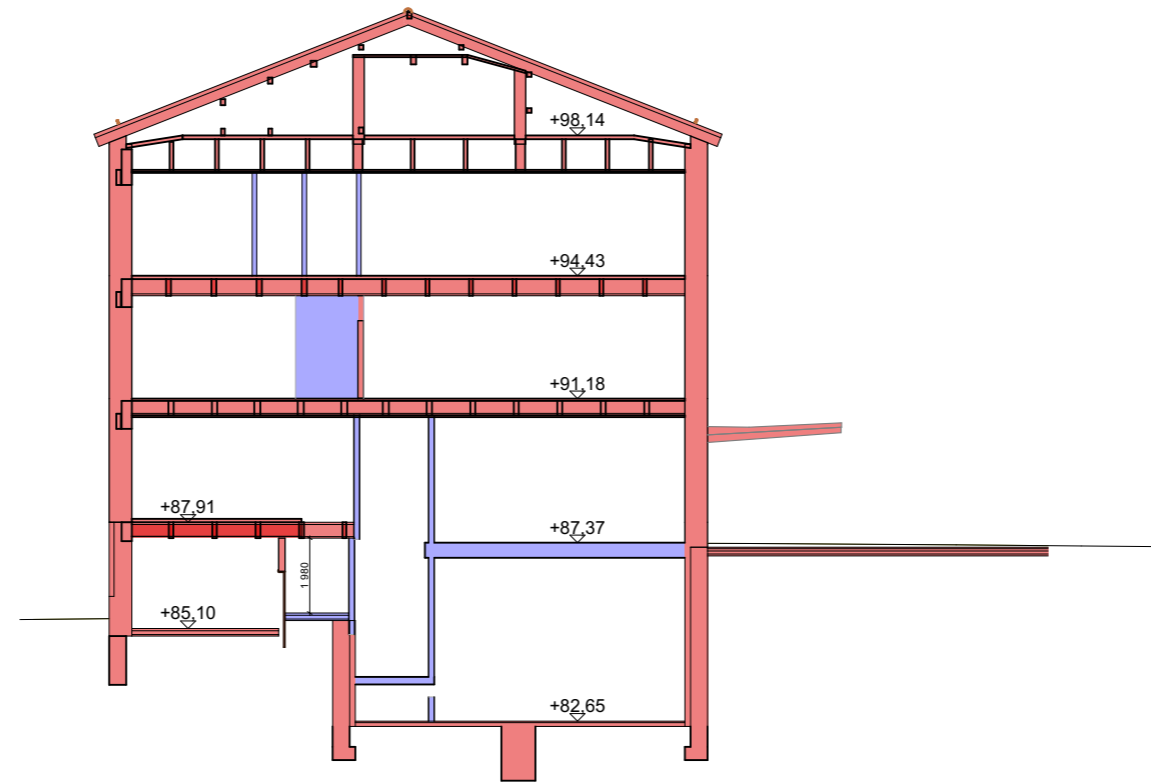




A

Leikkaus

1:200

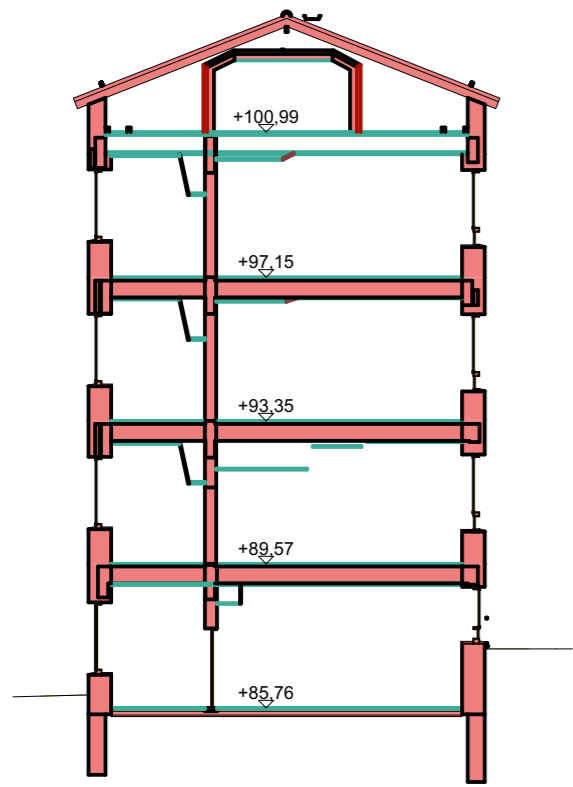


E

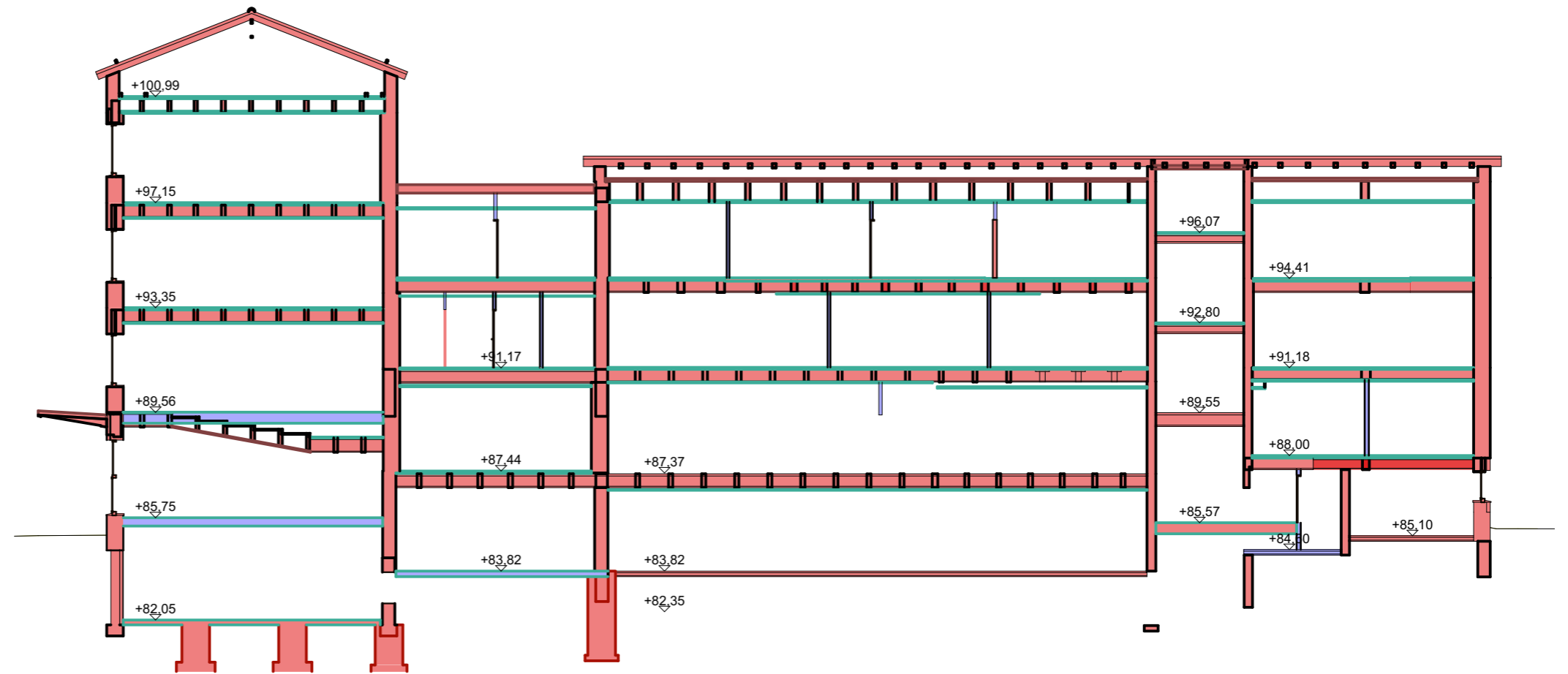
Leikkaus

1:200

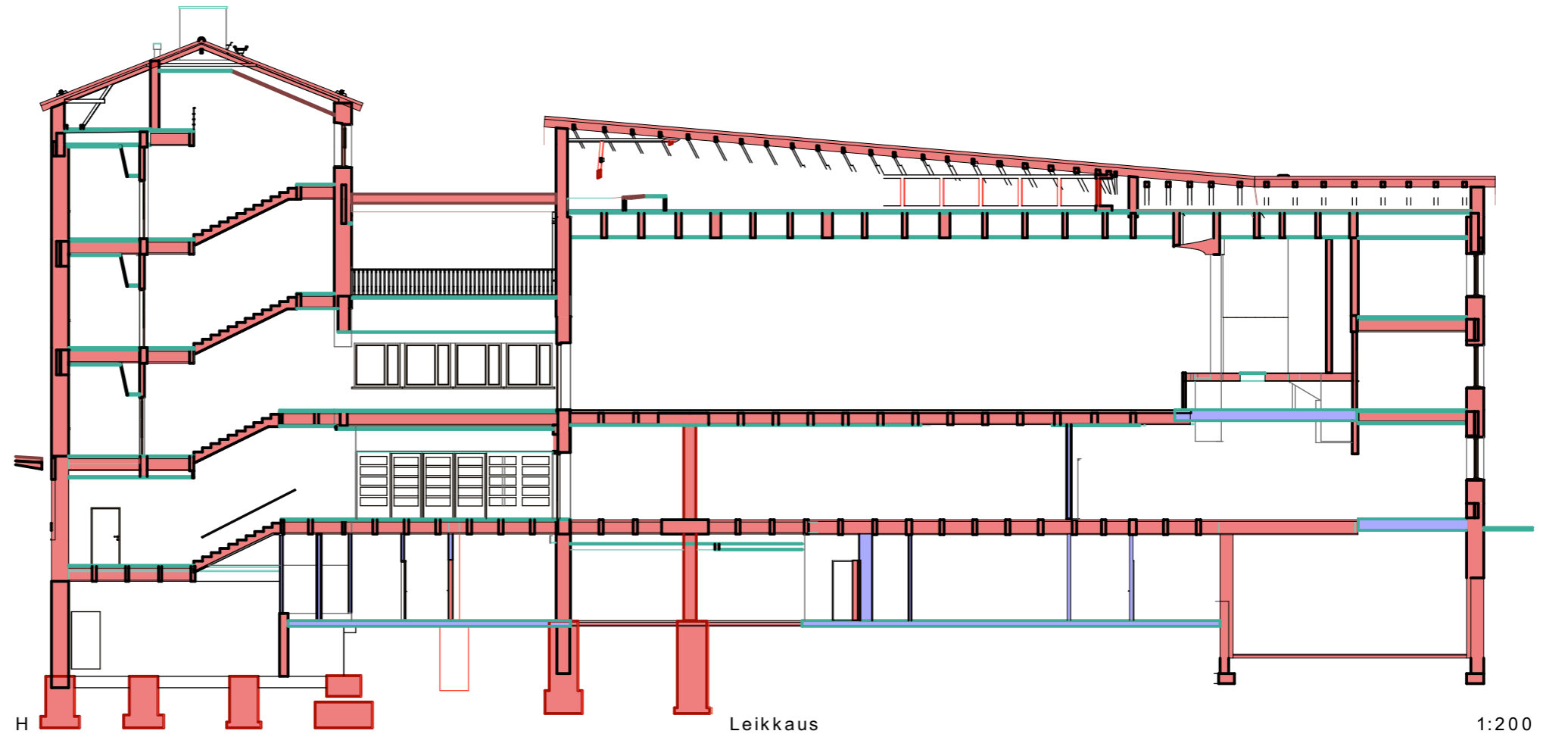




G Leikkaus 1:200



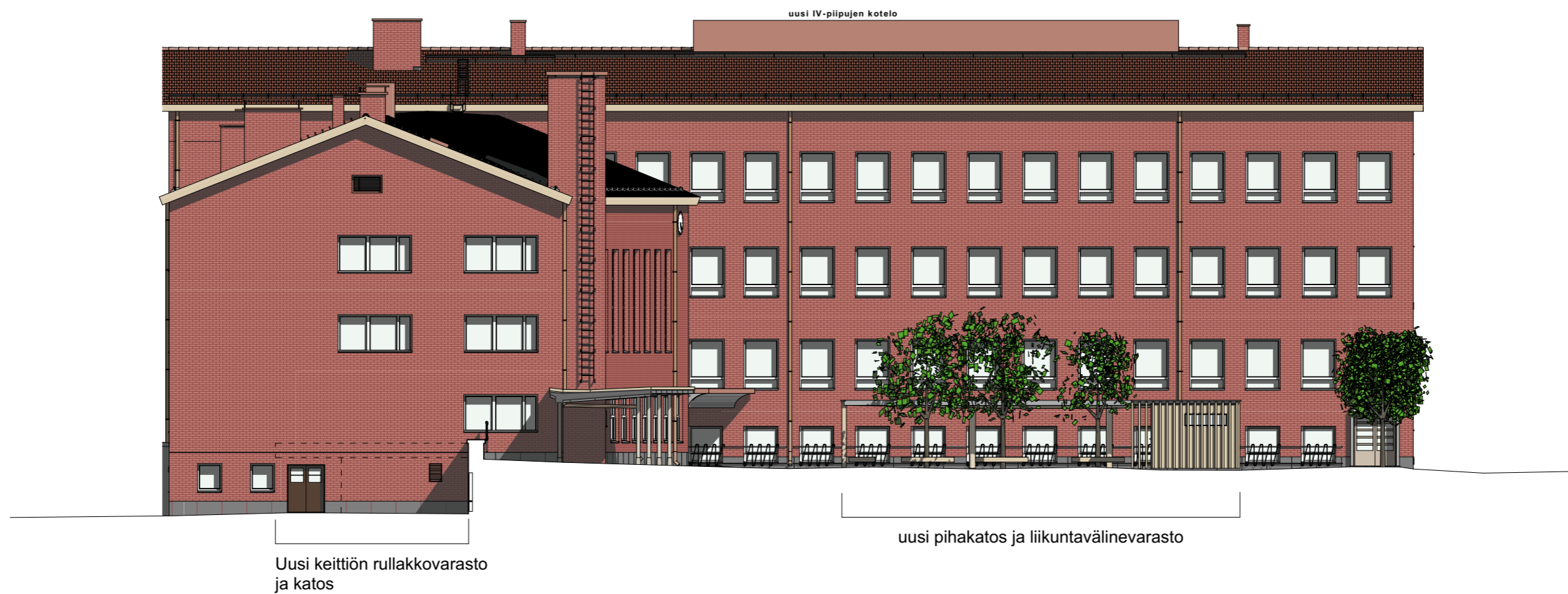
K Leikkaus 1:200



H Leikkaus 1:200



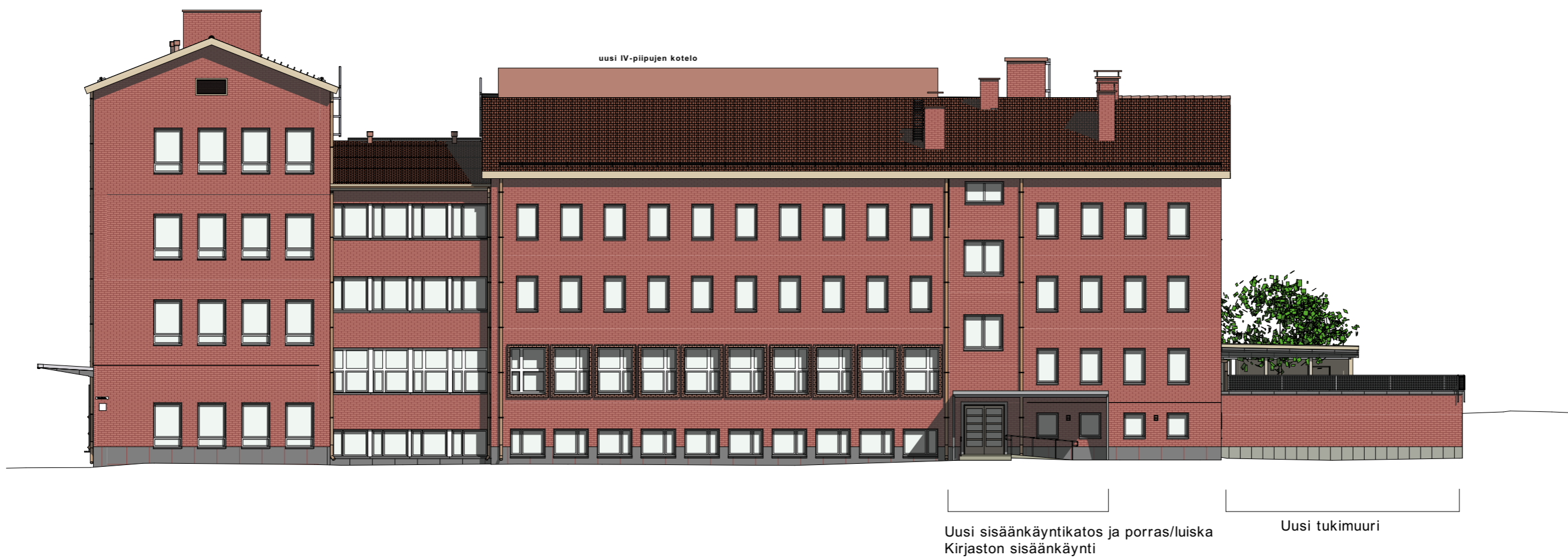




Julkisivu etelään

1:200





Julkisivu länteen

1:200



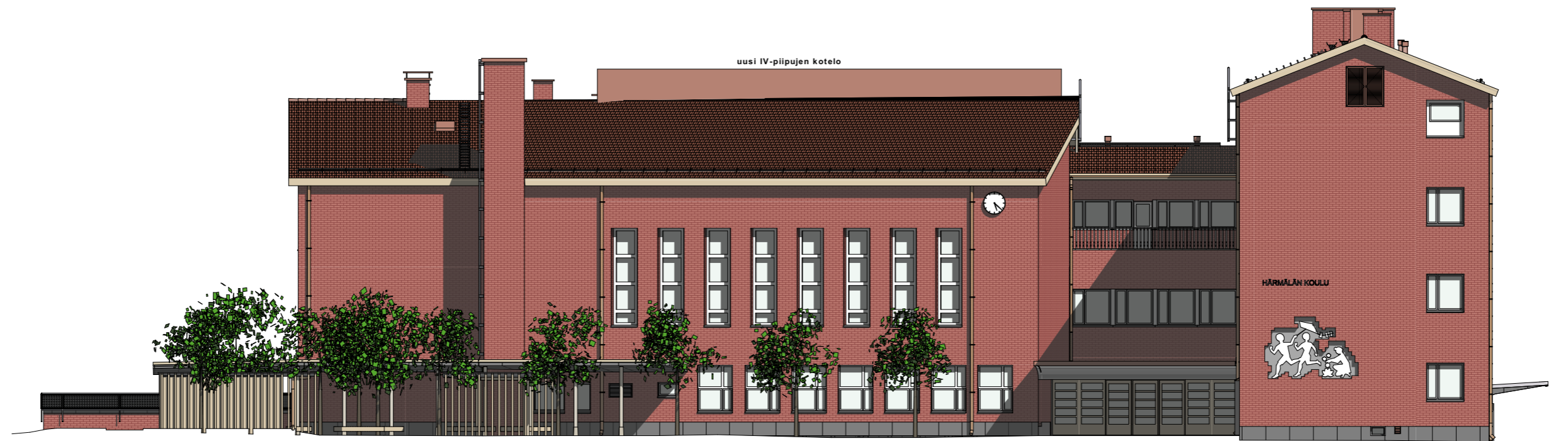




Julkisivu pohjoiseen

1:200





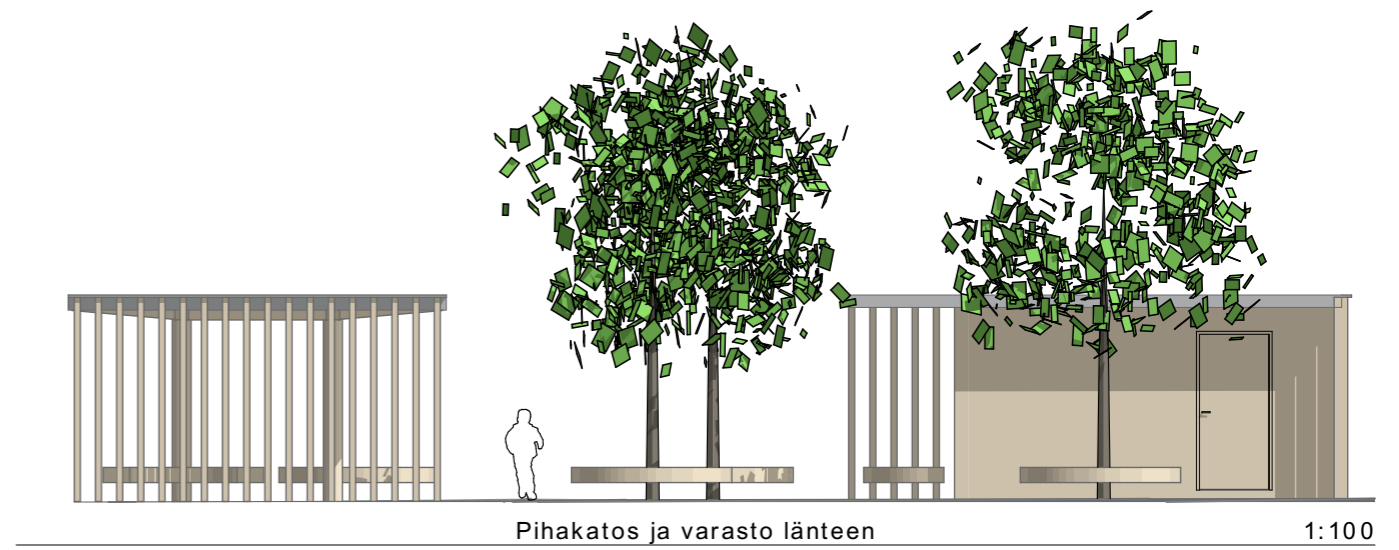
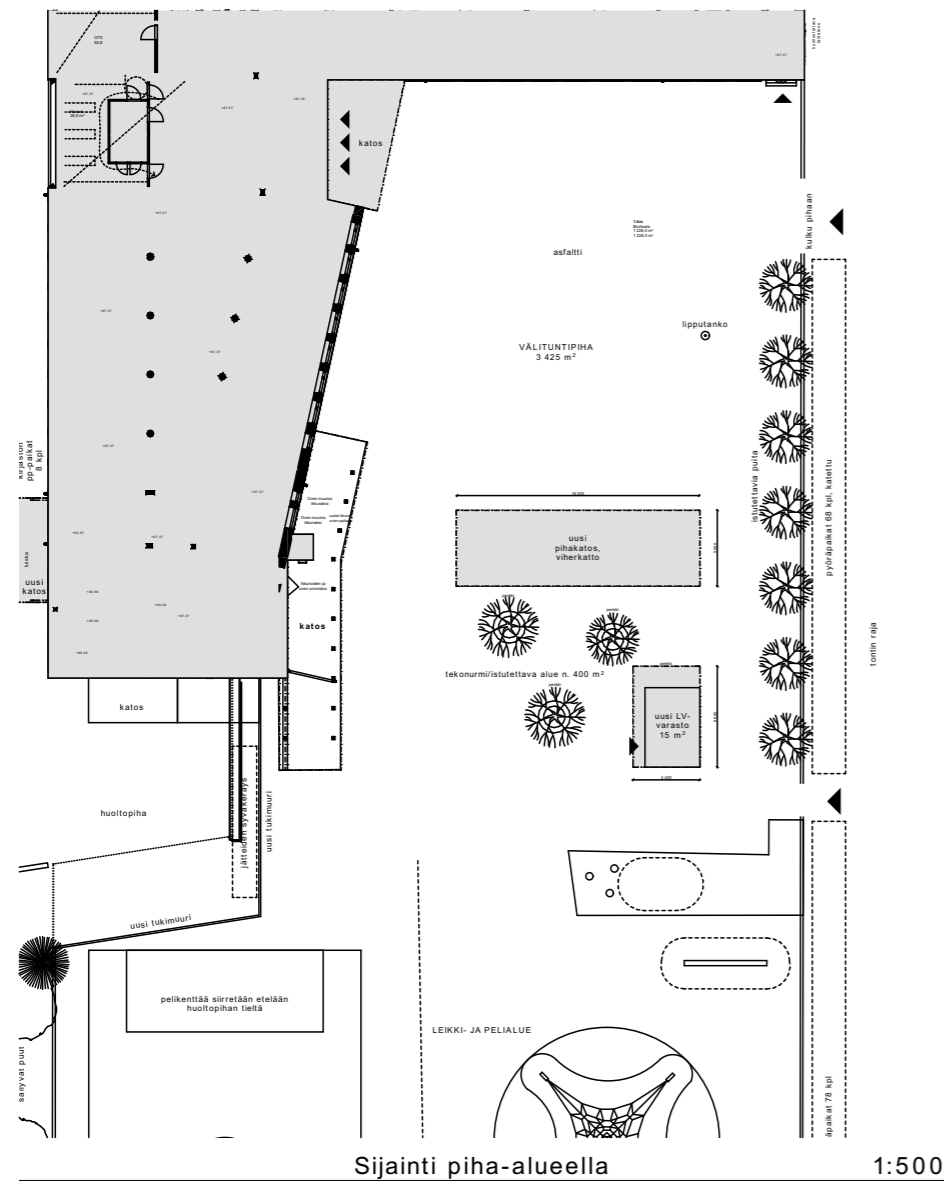
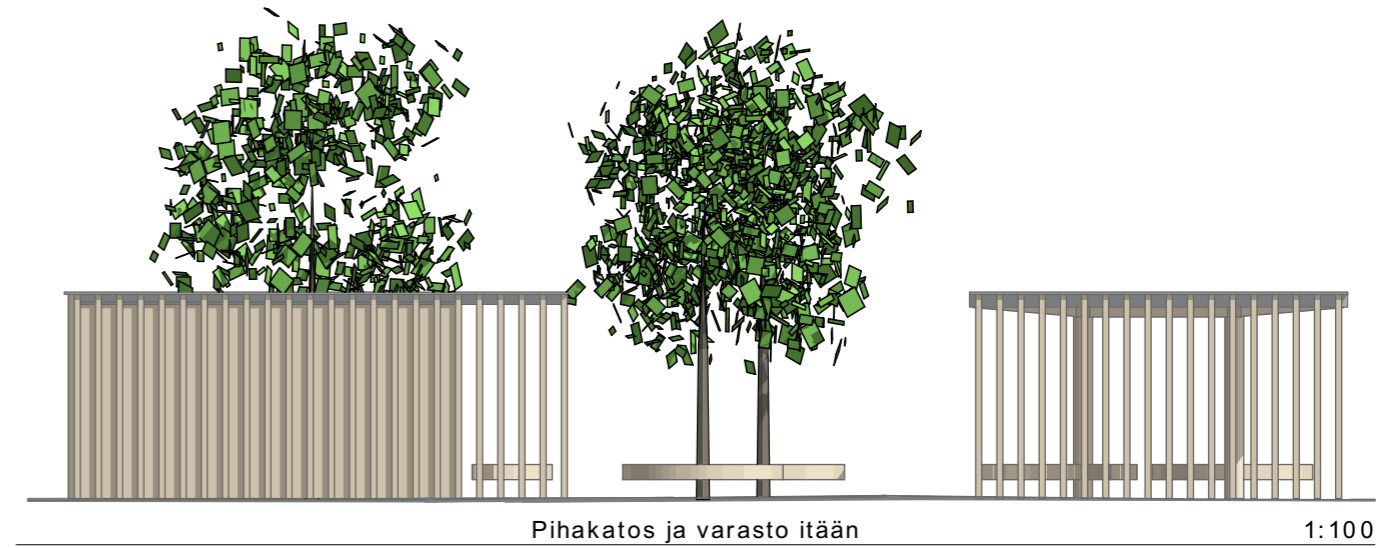
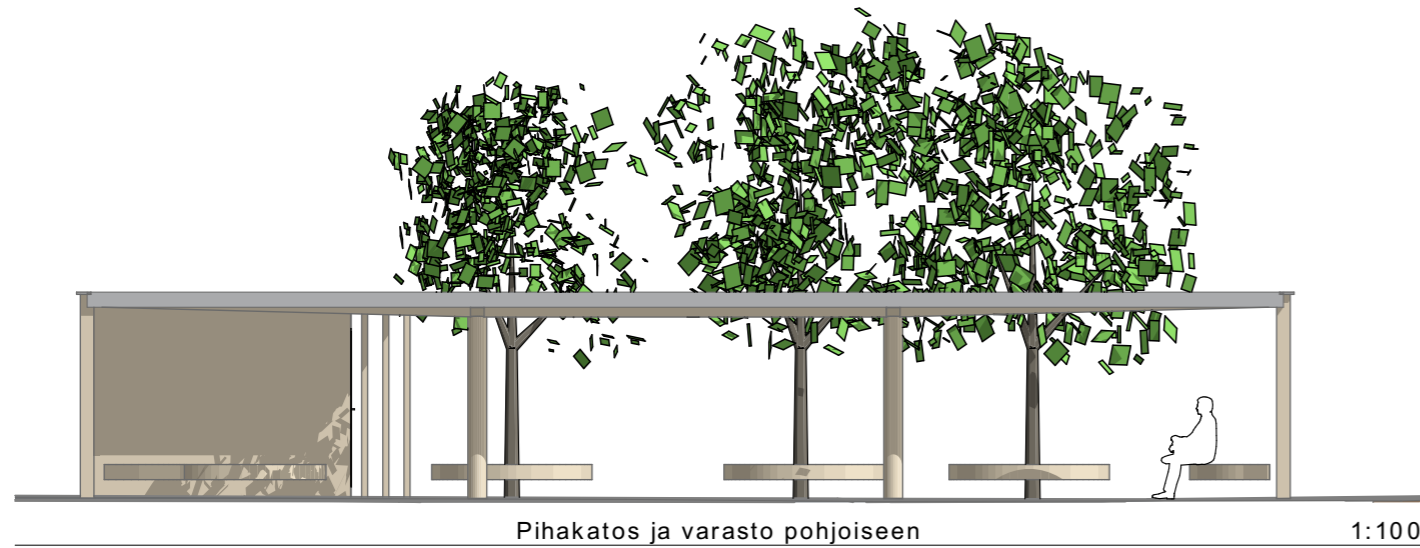
uusi pihakatos ja liikuntavälinevarasto

Julkisivu itään

1:200







Härmälän koulu, välituntipiha  
katosrakennelma ja liikuntavälinevarasto  
LUONNOS 14.3.2022

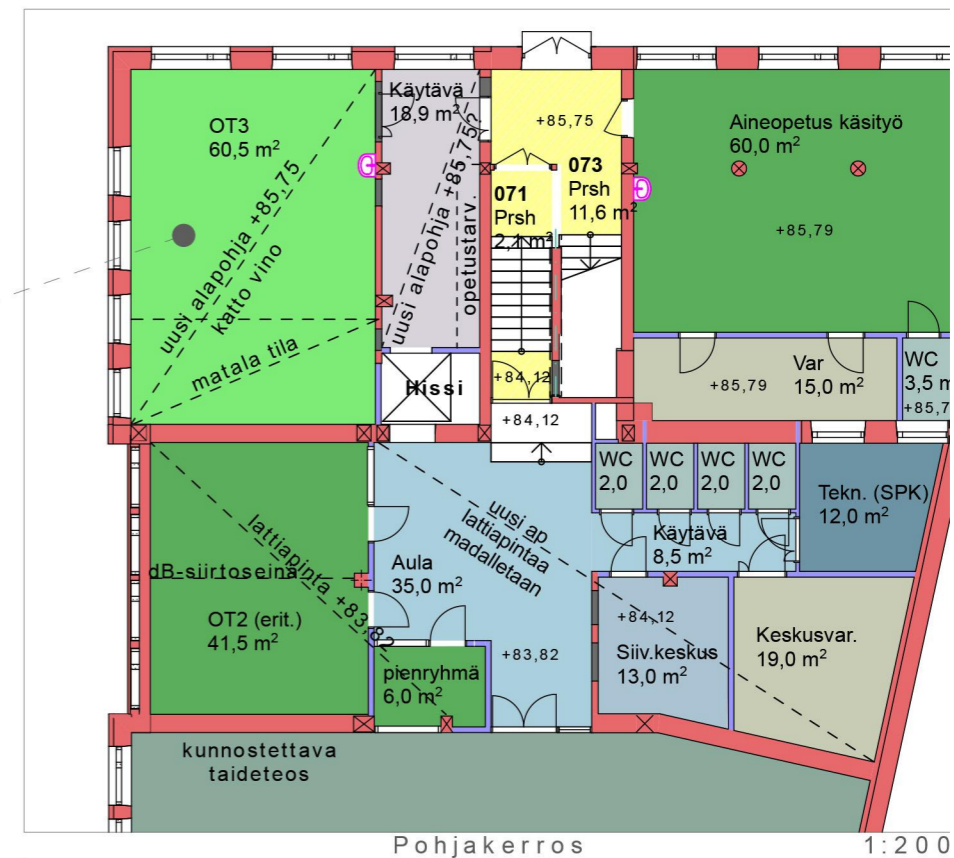
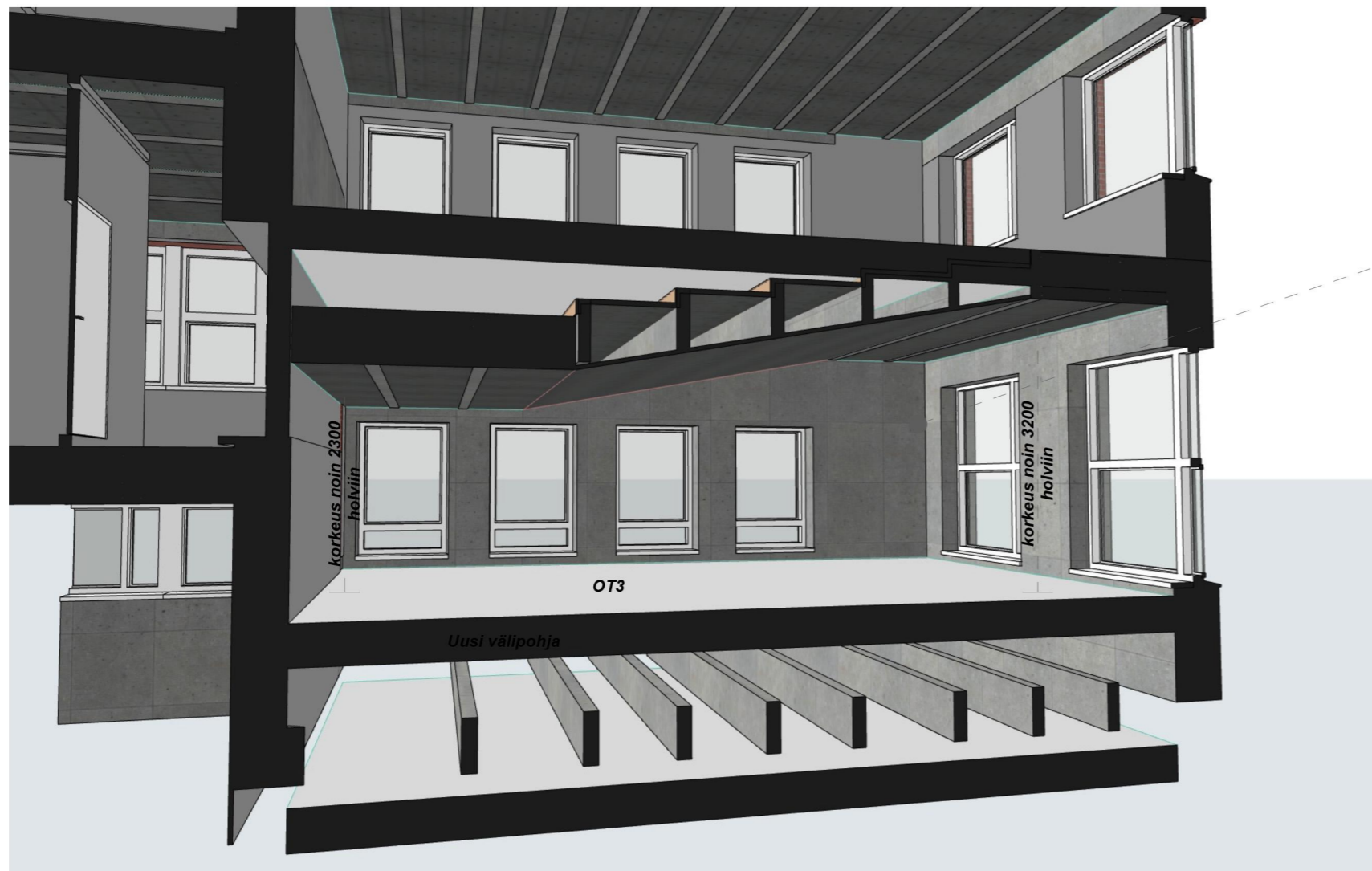


NOSTIN













25.3.2022

arkkitehtitoimisto  
**FORSSI OY**

Härmälän koulu  
Ehdotus



